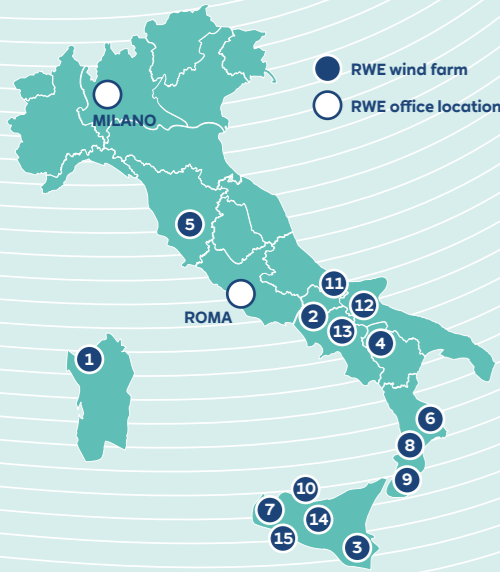


# We are among the leading players in the renewable energy market in Italy

With an installed **onshore wind capacity of about 500 MW**, capable of meeting the annual energy needs of about **400,000 households**, we are present in the country with **15 wind farms** in operation.

In addition, two new onshore wind farms, with a total installed capacity of 108 MW, are scheduled to be commissioned by mid-2025. Italy represents one of the key markets for RWE in Europe.



RWE wind farm	MW	Commercial Operating Date
1 Florinas	20,00	2004
2 Iardino	14,00	2005
3 Vizzini	23,80	2006
4 Monte Cute	44,00	2006
5 Poggi Altì	20,00	2006
6 Marco Aurelio Severino	44,00	2007
7 Santa Ninfa	32,30	2007
8 Serra Pelata	54,00	2007/2010
9 Piano di Corda	44,00	2007/2010
10 Alcamo	32,00	2011
11 Ururi	26,00	2011
12 Deliceto	23,00	2012
13 Marcone	57,00	2019
14 Alcamo II	13,60	2021
15 Selinus	25,20	2022

Owned renewables capacity as of May 2023. Pro rata capacity.



Scan to watch



Scan to watch

## RWE in Italy

Our energy for a sustainable life

RWE Renewables Italia S.r.l.  
Via Andrea Doria 41/G  
00192 Rome  
T +39 0695056362  
it.rwe.com



rwe.com

# ENERGISING THE FUTURE

## Strong industry experience throughout the value chain

We can count on the experience and skills of more than **160 employees** in our country: project managers, project engineers, technicians and operators. **Highly qualified personnel** active in all stages of the value

chain: from the scouting of potential sites for development, to construction and maintenance, to decommissioning and repowering of plants throughout the country. Always prioritizing the highest quality of projects.



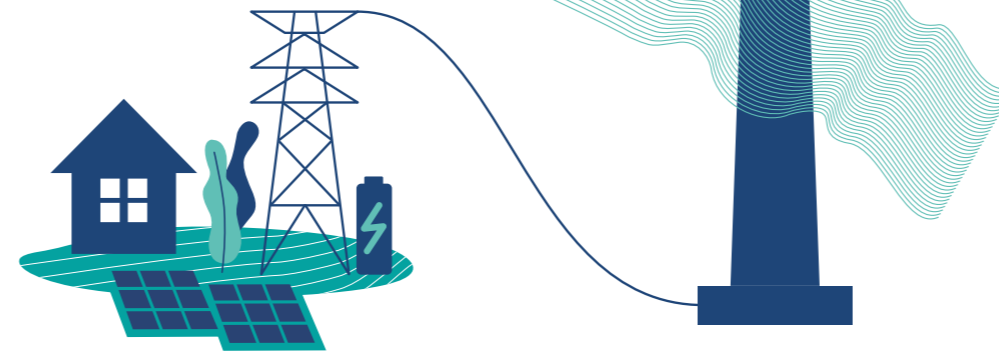
Scan to watch

## RWE is leading the way to a green energy world

In the years 2024 to 2030, RWE wants to invest €55 billion worldwide in renewable energy, batteries, flexible generation and hydrogen projects and expand its green portfolio to **more than 65 gigawatts (GW)**.

The **plant portfolio** includes **offshore and onshore wind, solar, hydro, hydrogen, batteries, biomass and gas**. RWE **Supply & Trading** provides tailor-made services for large customers.

RWE has operations in markets in **Europe, North America and Asia-Pacific**. It employs about **20,000 people\*** worldwide and has a clear goal: to achieve **zero emissions by 2040**.



\*As of 31.12.2023

## Our concrete commitment to territories

Wherever we operate, our assets are vectors for local enhancement and growth. Our activities are based on strong partnerships and dialogue with local communities, ensuring environmental compensation and mitigation measures and promoting local culture and traditions.

With the Program **“RinnovaMente”**, designed to popularize the culture of energy and ecological transition, we have created an educational project aimed at **schools** in the territories that host our plants and scheduled a series of **events to meet with local communities**. Since, for us at RWE, there is no **energy transition** without **cultural transition**.



## Sustainable agrivoltaics

RWE has sustainability as a pillar of its mission, and we believe that agri-voltaics can combine energy needs with agricultural activity along with the protection of the environment and landscape.

An interesting example is the innovative demonstration plant for agrivoltaics in Bedburg, Germany. Three technical solutions are planned for this project. The first system is fixed to the ground with a vertical module structure and leaves space for agricultural machinery to pass between the rows of PV panel modules. In the second system, a single-axis tracker on the ground, the modules are installed in rows and follow the sun during the day. This should optimize energy yields and provide more land for agricultural use. The third is a fixed ground-mounted system with an elevated structure from the ground, similar to an arbor, under which there are raspberry or blueberry crops. The demonstration plant will have a peak capacity of about 3 MW. Research work is scheduled to begin in early 2024.



## We care for the environment around us

As a major player in the global energy market, we are aware of the responsibility arising from our role. **Biodiversity is central** to RWE's sustainability strategy. Therefore, we have set a very ambitious goal of achieving **a net positive impact on biodiversity** for new plants **by 2030** at the latest. To this end, we are committed to developing solutions that reduce negative impacts and create positive effects, with a view to avoiding, minimizing, regenerating, restoring, and, if necessary, compensating for potential impacts on biodiversity from new onshore wind, solar, and storage system projects.

A tangible example of sustainable design was implemented in our **Selinus Wind Farm in Sicily**. It is a beautiful site, surrounded by olive trees, and transporting the 67-meter-long blades presented a challenge: to prevent the blades from touching the olive trees and to reduce environmental impact, a special **“Blade Lift”** technology was used to safely transport them to the site.

